

# MARINA MAP

## MARINA INFORMATION

**Coordinates:** 00°.25.984 S, 130°.48.386 E

☎ +62 951 317 6120

✉ [reservations@meridianadventuresdive.com](mailto:reservations@meridianadventuresdive.com)

🌐 [raja.meridianadventuredive.com](http://raja.meridianadventuredive.com)

**Depth of berths:** 9m High Tide, 3.6m Spring Low Tide

**Number of berths:** 13

**THE MARINA SCANS INTERNATIONAL CHANNELS 16 & 72 ON VHF.**



## MARINA MAP KEYS

■ 2.2 Ton Mooring Blocks

💧 Water

⚡ Power

🌊 Reef

🚢 Ferry

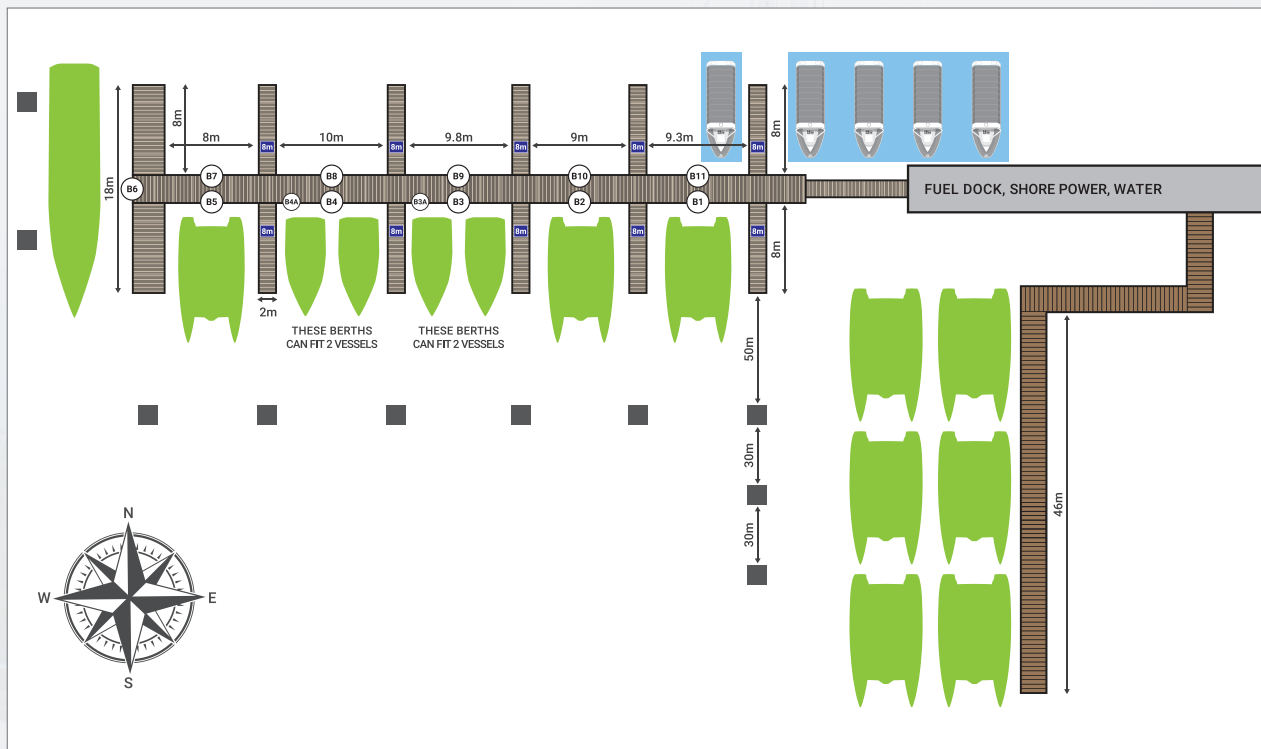
💡 Navigation Lights

🍴 Food

⛽ Fuel

○ Reef Markers

# BERTHS



## WATER DEPTH AT MARINA (LOW TIDE)

- Berths B2 to B10 is 5 metre depth
- Berths B1 and B11 is 3.6 metre depth

## BERTH TYPES

- 5 x Med moor berth positions on the floating dock for up to 35 metre LOA, with 4 metre depth and access to 65 Amp shore power.
- 2 x <30 metre LOA alongside berth, with 3.6 metre depth and access to 65 Amp shore power.
- We have 2.2 ton blocks in the water and tie ground lines onto these.

## SERVICES

- Ketapang restaurant & bar
- Swimming pool & lounge area
- Laundry services
- High speed WIFI
- 24-hour security
- Filtered fuel
- Freezer storage
- BBQ & BBQ rental for groups
- Reception facility for logistical support
- Transport arrangements
- Delivery address for packages
- Access to professional boat maintenance team

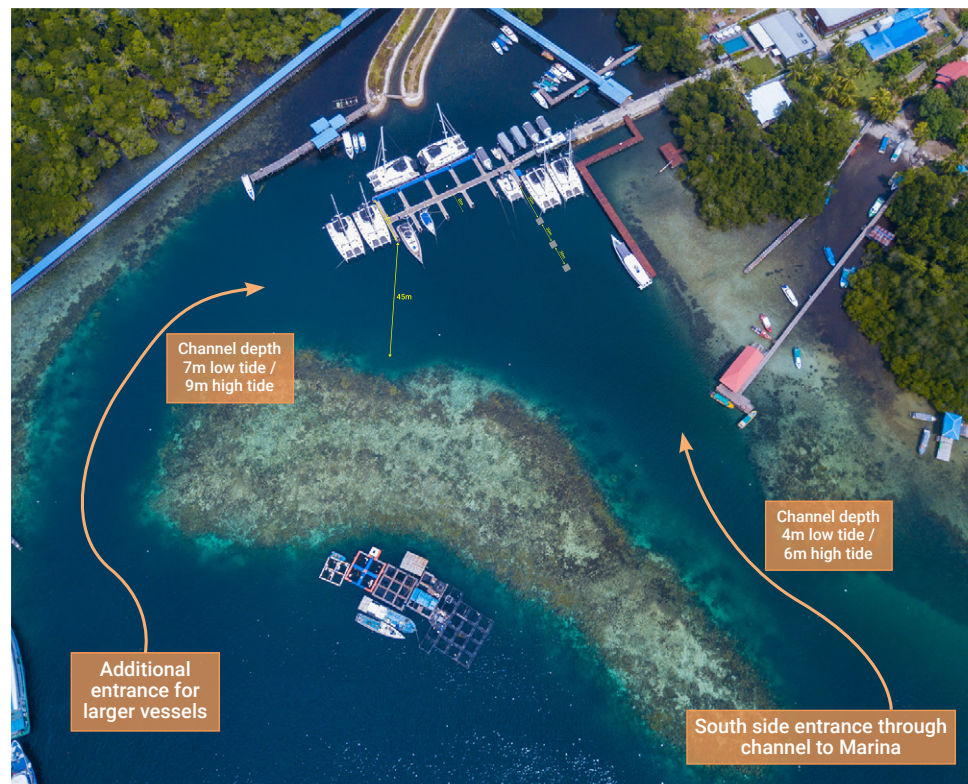
## MAP KEY

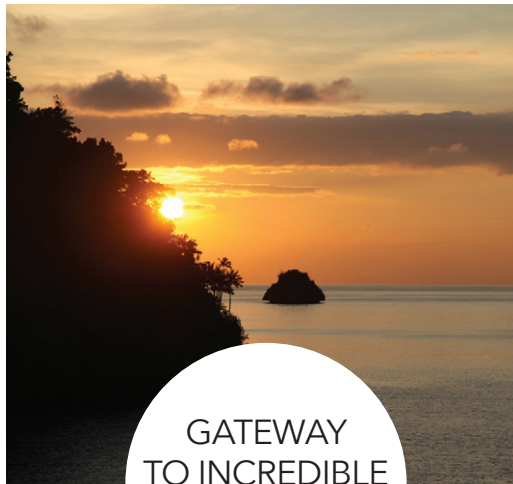
- Vessel
- Dive Boats
- 2.2 Ton Blocks with Ground Lines
- Wooden Jetty

# ANCHORAGE

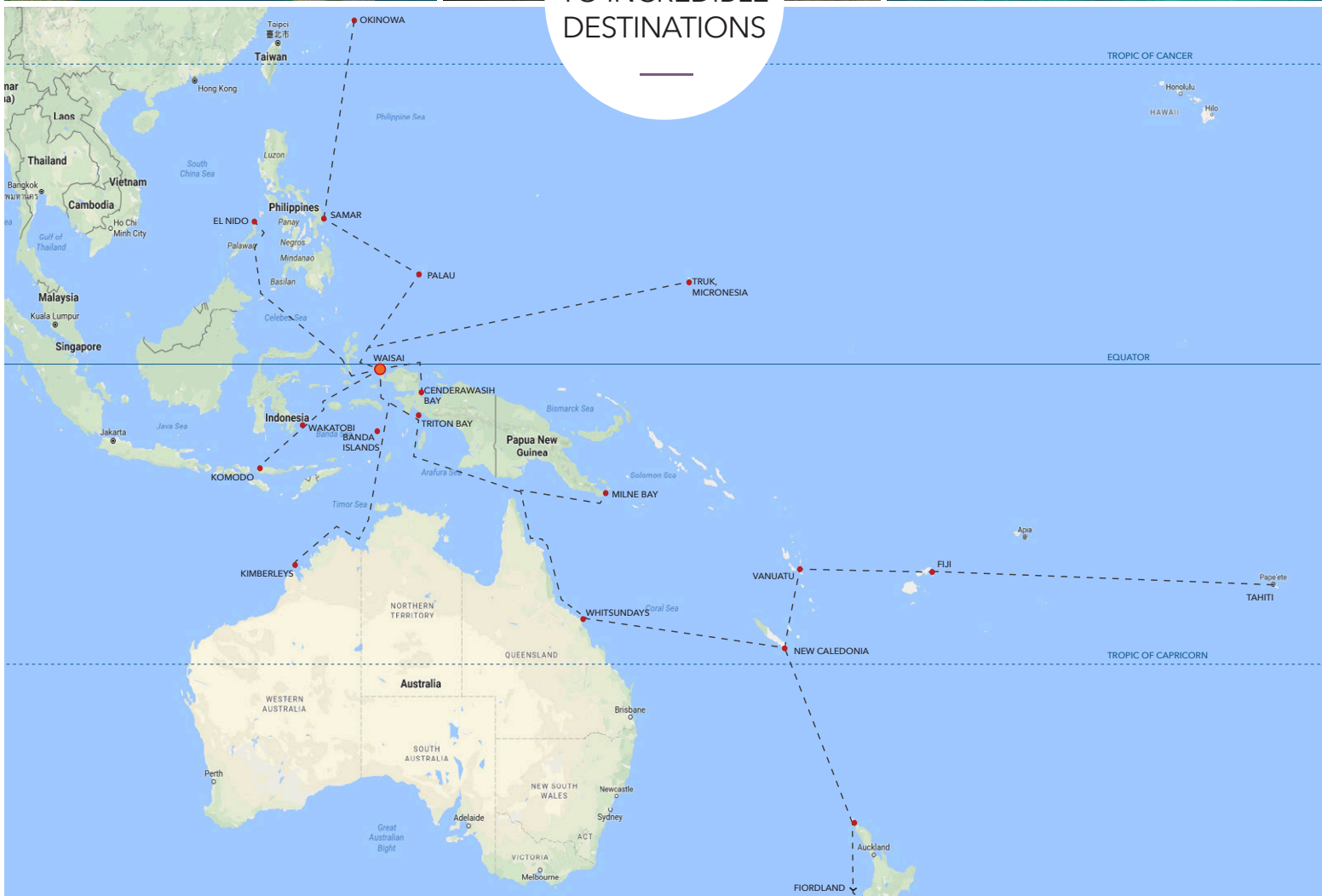
Please take note that we are surrounded by protected reefs. We have navigation lights coming into the marina from the south side and also have reef markers to help you identify the key spots.

Please see below where you are allowed to anchor.





## GATEWAY TO INCREDIBLE DESTINATIONS



## THE EPICENTRE OF THE REGION

The Meridian Adventure Marina Club will be the yachting epicentre of the region and serve as a gateway to the most popular cruising destinations on this side of the world.

Waisai is positioned on the equator and has stable weather all year round.