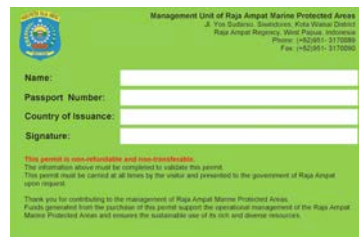




# TARIFF TO SUPPORT ENVIRONMENTAL SERVICES IN RAJA AMPAT

The **Raja Ampat Tourism Entry Fee** has now become the **Tariff to Support Raja Ampat Environmental Services**. Revenue from this fee are used to support efforts to ensure that the Marine Protected Areas (MPAs) of the Raja Ampat Archipelago can maintain their natural functions providing essential ecosystem services necessary to support life. Protection and management of the Raja Ampat MPAs is carried out by the Government of Raja Ampat Regency through the Regional Public Technical Service Agency for the Raja Ampat MPAs under the Raja Ampat Fisheries Office, working in collaboration with local indigenous peoples and non-government organizations (NGOs).

## PROOF OF PURCHASE AND PERIODS OF VALIDITY



Plastic card valid for one year from date of purchase

In accordance with Regent Decree 18/2014, any person that enters the Raja Ampat Marine Protected Area for ecotourism, general tourism and research purposes must obtain an environmental services permit.

**Note:** Raja Ampat UPTD KKP Unit Officers will check travel card, make sure you bring it when traveling in Raja Ampat.

## WHERE TO PAY THE TARIFF TO SUPPORT THE RAJA AMPAT ENVIRONMENTAL SERVICES:

**Raja Ampat Conservation and Tourism Information Center**  
Ruko Cendrawasih Address: Jl. Basuki Rahmat, KM 7,5  
(Opposite side of Domine Eduard Osok Airport - Sorong)  
CP: Ami, Phone: +26 811 485 2033

**BLUD UPTD KKPD Raja Ampat Office**  
Address: Jl. Yos Sudarso, Siwindores, Distrik Kota Waisai, Raja Ampat  
Phone: +26 (0951) 317 0089

**Ticket Booth at Waisai**  
Port Office, Raja Ampat

**After registering and paying the tariff, you will receive:**

- Official receipt (proof of purchase)
- Raja Ampat Marine Protected Areas Visitors Card

Please retain the receipt and card during your visit to Raja Ampat and bring it with you if you return within a period of one year.

**Note:** Please present proof of identity (Indonesian Identity Card or Driver's Licence, Passport/Kitas (for Foreigners)).

**MANAGEMENT OF ENTRY FEE BEFORE:**  
Management Team for the Visitor Fee under Raja Ampat tourism office

**MANAGEMENT OF ENTRY FEE NOW:**  
Regional Public Technical Service Agency for the Raja Ampat Marine Protected Areas (MPAs) under the Raja Ampat Fisheries Office.

**COST OF RAJA AMPAT MARINE PROTECTED AREAS VISITORS CARD:**

IDR 500.000, per year (domestic)  
IDR 1.000.000, per year (international)

**BLUD UPTD KKPD RAJA AMPAT**

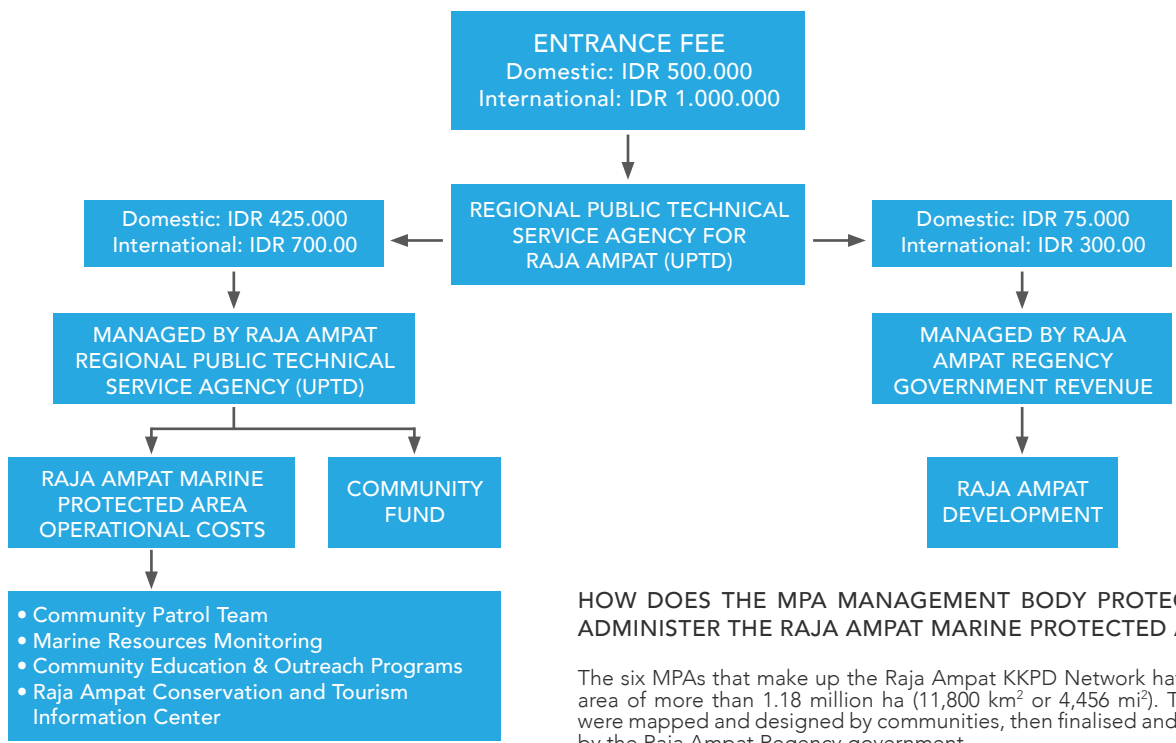




# WHO IS RESPONSIBLE FOR PROTECTING THE MARINE RESOURCES OF RAJA AMPAT

The Raja Ampat Marine Protected Areas (MPAs) are managed by a Technical Service Unit (UPTD) under the Fisheries Office of the Raja Ampat Regency Government. The UPTD has been established as a Regional Public Service Agency (BLUD), which allows the agency to flexibly use non-tax government revenues generated by tariff charges to cover a portion of the costs of managing and protecting Raja Ampat's coral reefs, fishes, habitats and other Marine resources and their use for tourism and recreation.

## WHERE DOES YOUR MONEY GO?



## HOW DOES THE MPA MANAGEMENT BODY PROTECT AND ADMINISTER THE RAJA AMPAT MARINE PROTECTED AREAS?

The six MPAs that make up the Raja Ampat KKKPD Network have a total area of more than 1.18 million ha (11,800 km<sup>2</sup> or 4,456 mi<sup>2</sup>). The MPAs were mapped and designed by communities, then finalised and adopted by the Raja Ampat Regency government.

Monitoring, patrolling and enforcement are carried out by local community members. Financial support to cover the costs of fuel for patrols, maintenance of boats and equipment and stipends for participating community members are provided by the government of Raja Ampat through budgetary allocations and the revenues of the Raja Ampat Environmental Services Tariff.

Seventy percent of the Raja Ampat Environmental Services Tariff for the international visitors (and 80% of the tariff for domestic visitors) goes directly to support the management and protection of MPAs. The remaining 15% - 30% is used by the Raja Ampat Regency Government to support economic development, education, health and community services.

The national government of Indonesia does not receive any portion of this tariff, nor is any portion diverted to any private company or individual. The waters of Raja Ampat contain the most biologically diverse populations of fishes, corals, invertebrates known in the world, as well as important populations of endangered sea turtles and marine mammals. Your contribution to these tariffs helps protect more than 11,800 km<sup>2</sup> of these vital and important marine habitats. Thank you for your support!

Thank you for contributing to the management of the Raja Ampat Marine Protected Area. Funds generated from the purchase of this permit support the operational management of the Raja Ampat Marine Protected Area and ensure the sustainable use of its rich and diverse resources.



**BLUD UPTD KKKPD RAJA AMPAT**