



MERIDIAN ADVENTURE MARINA CLUB & RESORT WAISAI

INTRODUCTION

MARINA CLUB

MARINA CLUB SERVICES

BERTHS

PERMITS

VESSEL CLEARANCES AND
MARINE AGENCY SERVICES

BUNKERS

WHY RAJA AMPAT

INCREDIBLE DIVING

HOMESTAY DIVE ADVENTURES

THE PERFECT LOCATION



MARINA CLUB & RESORT WAISAI
**MERIDIAN
ADVENTURE**

PT MERIDIAN CAPITAL MARINE TOURISM ENTERPRISES

INTRODUCTION

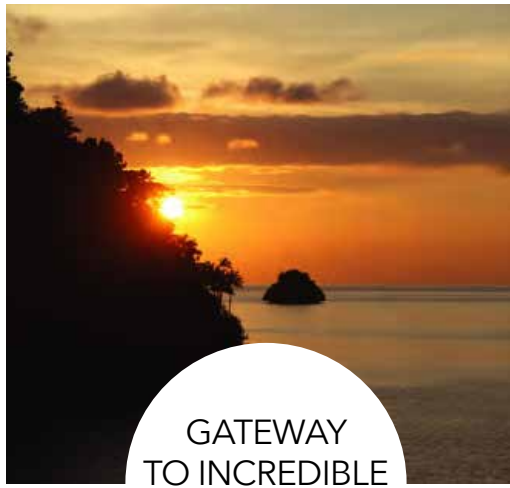
Meridian Adventure is supporting Waisai to become the premier yachting hub in Asia, and has plans to expand its now small marina into one of the most popular marinas in the world. With the support of the yachting community, we will achieve this vision.

The Waisai Marina will be the yachting epicentre in this region of the world and serve as a gateway to both the Pacific and Indian Oceans.

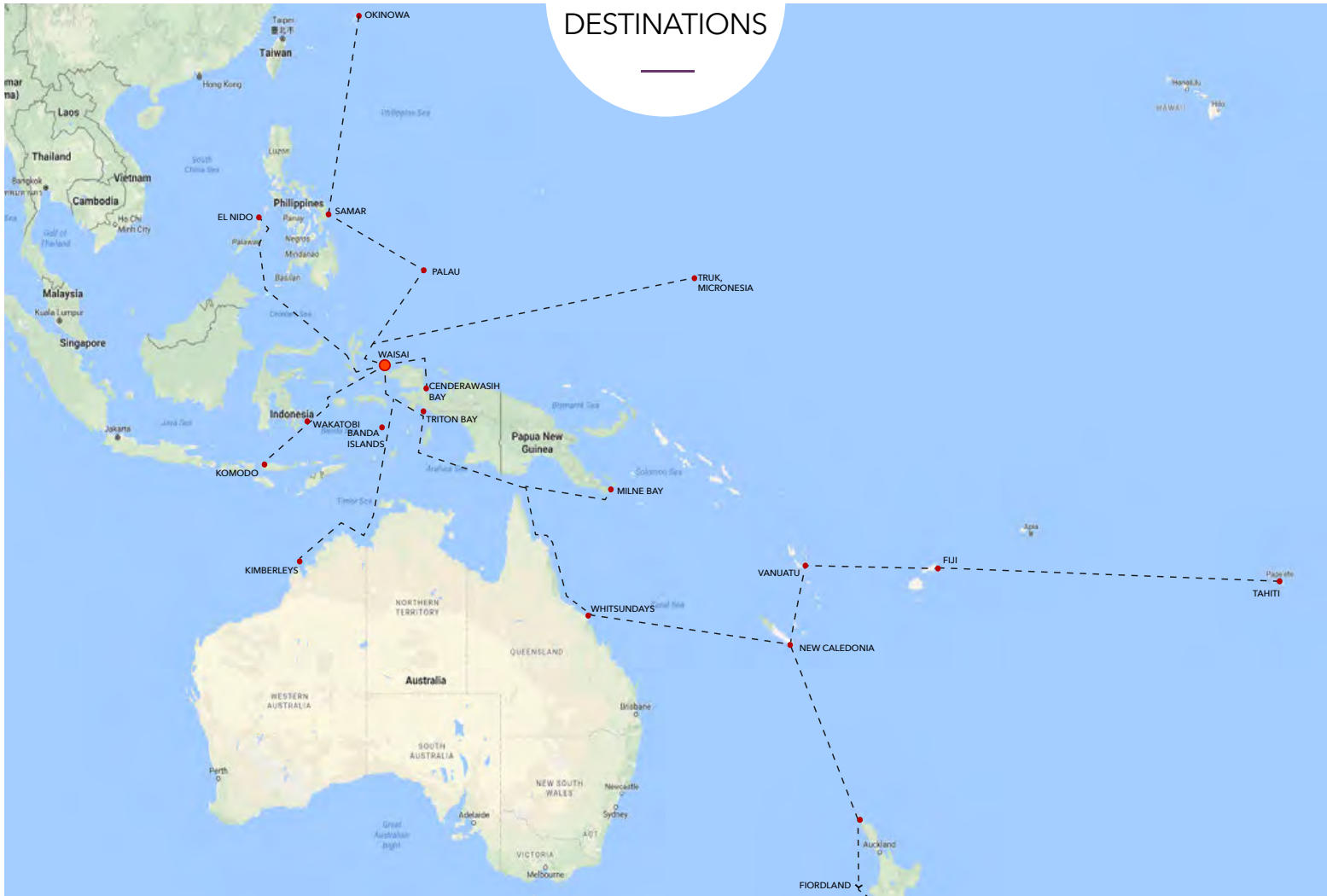
Pursuant to this vision we have teamed up with yacht agents as well as the Raja Ampat community, to create easy access to this premium destination for international yachts. We are also in full support of the local liveaboard dive charter boat community as well as cruising yachts.

You can arrive in Waisai and execute your national or international inbound and outbound clearances. You can make your berth reservations in advance. You can achieve your permits in advance of arrival. You can have confidence about the cruising regulations. You can have on-site support 24/7 with your yacht agent as well as 60 staff at the PTMCMTE facility (Meridian Adventure Marina Club). You can even fuel if necessary.

SEE MORE ON OUR WEBSITE
www.meridianadventuredive.com



GATEWAY TO INCREDIBLE DESTINATIONS



THE EPICENTRE OF THE REGION

The Waisai Marina will be the yachting epicentre of the region and serve as a gateway to the most popular cruising destinations on this side of the world.

Waisai is positioned on the equator and has stable weather all year round.

MARINA CLUB

Meridian Adventure Club is dedicated to creating a meeting point for yacht owners and crew. Our goal is to provide a friendly club environment where like-minded people can share their ideas.

Our facility offers a fusion restaurant. The menu is designed with international flare, embracing food in its natural form, allowing for clean, uncomplicated flavours. By using fresh produce, passion and character are achieved with each individual meal – from the vibrant breakfasts to refreshing lunches, sunset canapés and dinners.

Other facilities include a swimming pool and lounge area, a fully licensed bar and an adventure dive club.

Marina Berth rates include access, and Paid Membership for Vessels at Anchor & Non-residents includes access to:

- Mangrove lounge and sunset deck, pool table, library, board games
- Ketapang restaurant & bar
- Swimming pool & lounge area
- 24-hour security
- Reception facility for logistical support
- Transport arrangements
- Delivery address for packages
- Access to professional boat maintenance team

FUSION
RESTAURANT

ADVENTURE
DIVE CLUB

SWIMMING
POOL



A PADI 5-STAR
DIVE RESORT



MARINA CLUB SERVICES

FILTERED FUEL

We have a Racor fuel filtering system installed on our dock to ensure our marina guests are getting good, clean fuel. (Price available on request).

LAUNDRY

Our facility boasts a laundry team that has been professionally trained to super yacht standards by an ex-super yacht laundry specialist on linen & garment care, stain treating, pressing and folding. We take care of laundry from our hotel guests and welcome all laundry needs from our marina guests. (Laundry price list available on request).

FREEZER STORAGE

We understand that Raja Ampat is a remote location and we have a 20 foot reefer freezer. Should you need to keep your goods frozen during your season in the Raja Ampat regency we have space available (Price available on request).

BBQ & BBQ RENTAL

We have an excellent Weber gas BBQ available for rental. (Price available on request).

SEE MORE ON OUR WEBSITE
www.meridianadventuresdive.com/marina-club



MARINA CLUB
SERVICES



BERTHS

5 x Med moor berth positions on the floating dock for up to 35 metre LOA, with 4 metre depth and access to 65 Amp shore power.

1 x <30 metre LOA alongside berth, with 4 metre depth and access to 65 Amp shore power.

200 metres of commercial quay space, with a depth of 14 metres and shore water (no shore power yet). Perfect for Med moor positioning.

In the absence of berth availability, Waisai offers a clean, calm, safe anchorage with no anchorage fees. Meridian Adventure provides water taxi services, at no charge, to all club members, to and from our Marina Club and the anchorage.

Berths should be reserved in advance.

The marina scans International channels 16 & 72 on VHF.

The marina coordinates are: 00°.25.984 S, 130°.48.386 E

READ MORE ON OUR WEBSITE
www.meridianadventuresdive.com/marina-club



VIEW ON OUR WEBSITE
www.meridianadventuredive.com

VARIOUS
BERTH OPTIONS
AVAILABLE



PERMITS

Individual Visitor Permit

A permit tag structure is in place and enforced by the government. The permit is valid for 12 months from date of purchase. Meridian Adventure can help guide you on your vessel permit application to the Ministry of Tourism Department in Raja Ampat.

Raja Ampat Marine Park Cruising Permit

Permits are available for international yachts for 1, 3, 6, 8, or 12 month periods. This is enforced by the Coast Guard and must be available on board for inspection at all times. Meridian Adventure facilitates the purchase of these permits from the authorities, on your behalf and in advance of your arrival.

Permits are necessary for all districts, reserves, national parks and marine protected areas in and around Raja Ampat, Indonesia.



[VISIT OUR WEBSITE TO VIEW MORE](#)

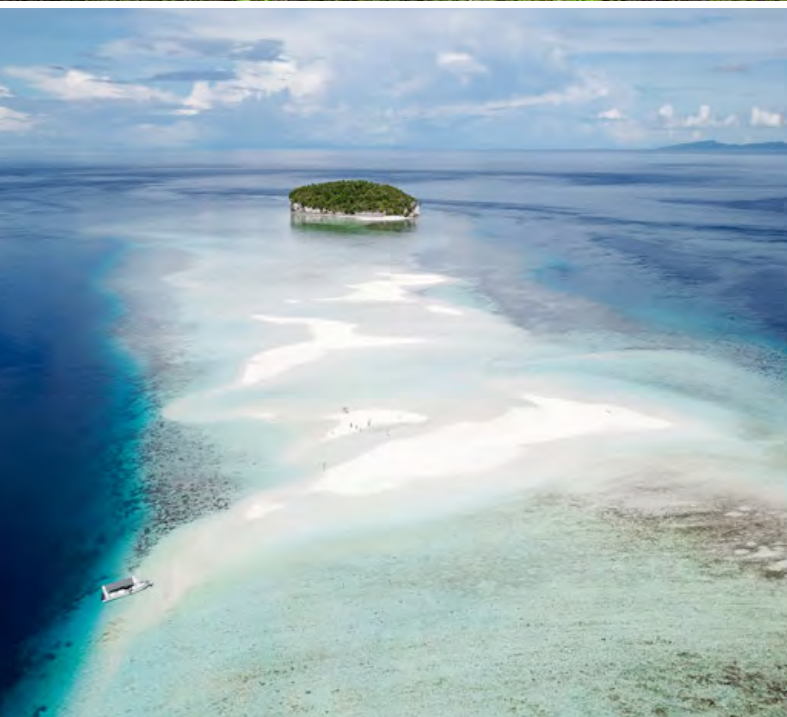


[VISIT OUR WEBSITE TO VIEW MORE](#)

[READ MORE ON OUR WEBSITE
www.meridianadventuredive.com/marina-club](http://www.meridianadventuredive.com/marina-club)



BREATHTAKING
VIEWS



VESSEL CLEARANCES AND MARINE AGENCY SERVICES

Meridian Adventure understands the increasing demands of managing a vessel today. As a consequence, we have invited leading vessel support agencies to take residence at our facility in Waisai. Services provided not only include vessel clearances, but a full range of marine agency services, in what is currently one of the most remote places on earth. Services provided by leading superyacht agents are listed below.



CRUISING PERMITS



VESSEL CLEARANCES,
CUSTOMS & IMMIGRATION,
VISA SERVICES



TECHNICAL SERVICE
& SUPPORT



TRAVEL &
TRANSPORTATION



HELICOPTER & JET
RENTAL & PERMITS



EMERGENCY
SERVICES



FRESH PROVISIONS &
SUPPLIES



COURIER
SERVICES



FREIGHT
HANDLING



ITINERARY PLANNING
& GUIDES



SCUBA DIVING
SERVICES



CREW PLACEMENT
SERVICES

ENQUIRE ON OUR WEBSITE
www.meridianadventuresdive.com/marina-club



BUNKERS

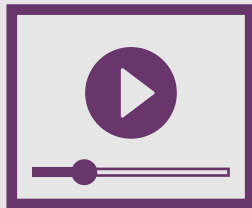
Diesel Fuel Oil (MGO) is available in Waisai at our facilities. Simply reserve your required bunkers through our online site, and your agent will facilitate the payment and logistics.

SEE MORE ON OUR WEBSITE
www.meridianadventuresdive.com/marina-club

WHY RAJA AMPAT

Raja Ampat is one of the world's most captivating cruising grounds and a true paradise on earth. Majestically named the "Four Kings", it is an archipelago comprising over 1,500 islands, cays and shoals forming part of the Coral Triangle. Described by scientists as a biological hotspot, and called the most beautiful island chain in all of South East Asia, Raja Ampat makes an everlasting impression.

The geography, the diving, the wildlife, the culture, and the hospitality of the people are all legendary. Thanks to the Indonesian Throughflow, the diversity of marine life is staggering and the water is as clear as gin, making the diving and snorkelling some of the best on the planet.



[WATCH THE MOVIE](#)



INCREDIBLE
SCENERY



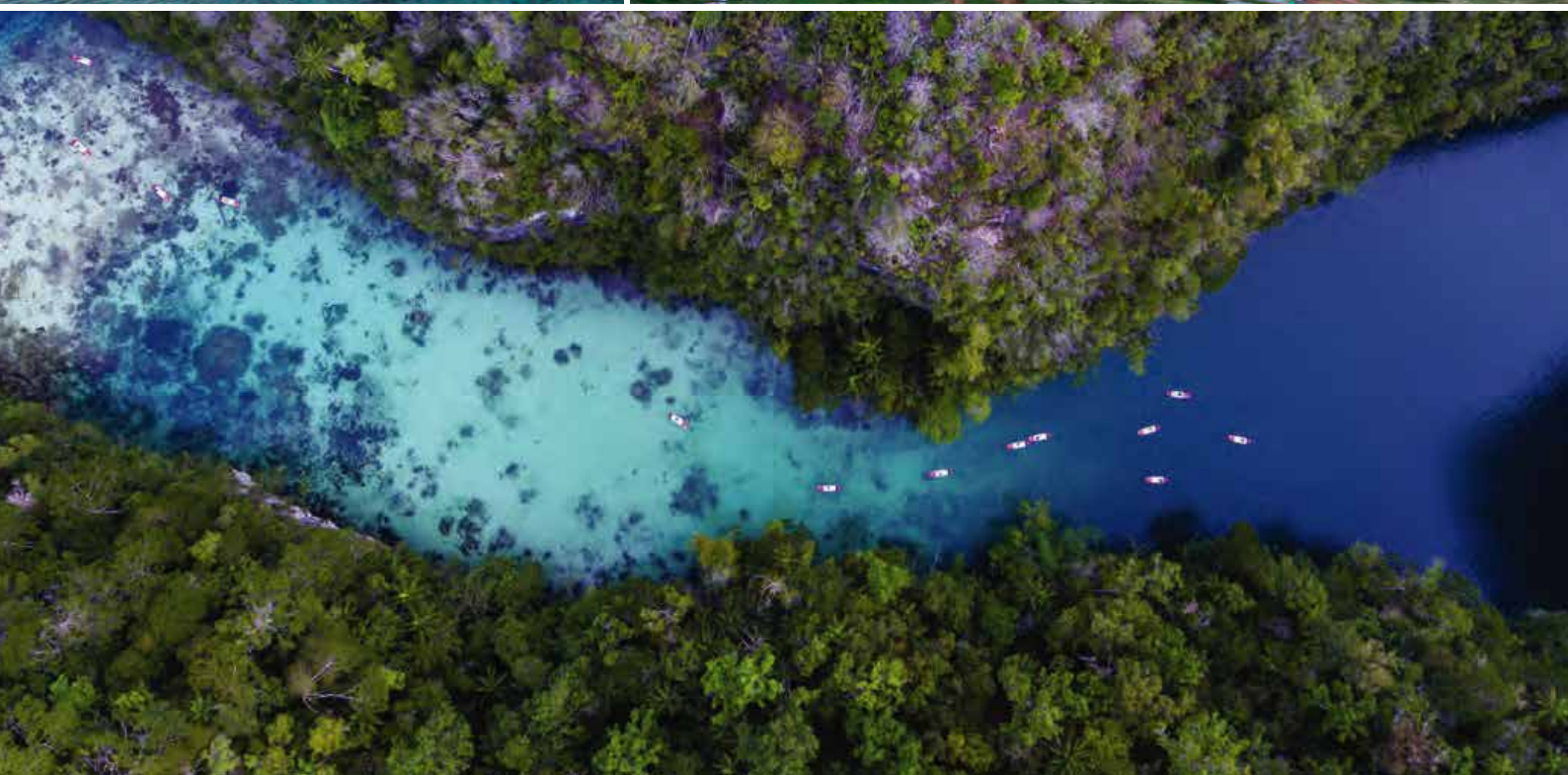


UNLIMITED
OUTDOOR
ACTIVITIES





PADDLE BOARDING
ADVENTURES

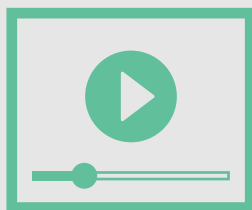


INCREDIBLE DIVING

Raja Ampat is a stunning tropical paradise often referred to as “diving’s final frontier”. It has the highest known concentration and diversity of marine life on earth, with 80% of all the world’s coral species, more than 1300 species of fish, 6 of the world’s 7 marine turtle species and 27 varieties of marine mammal. Meridian Adventure Dive offers you a wide selection of dive sites, easily accessible with our high-speed boats. This pristine marine metropolis is where manta rays glide, whale sharks breed, sperm whales feed, turtles lay eggs and tropical fish dazzle you with their spectacular array of colours.

Meridian Adventure Dive offers well maintained, high quality, top of the range equipment from Aqualung, to ensure your diving is memorable for all the right reasons. Our customised dive boats revolutionise functionality and comfort, effectively changing the way you will want to dive forever.

Leave it to Meridian Adventure Dive to organise a MAD Experience you are sure to remember!



[WATCH THE MOVIE
ON OUR WEBSITE](#)



CRYSTAL
CLEAR
WATER



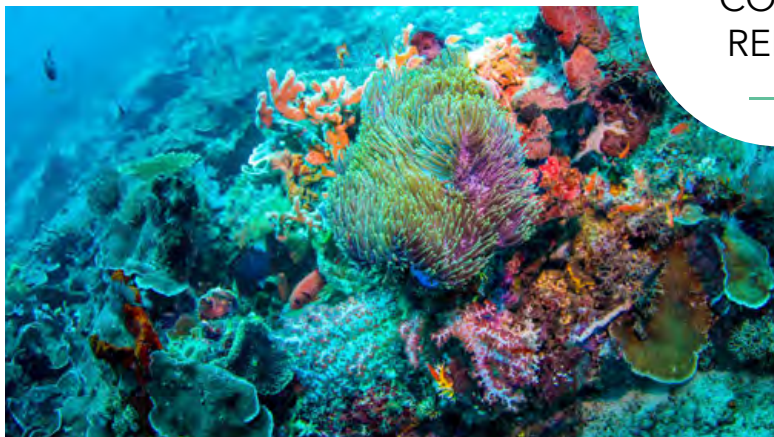


UNTOUCHED
DIVE SITES





AMAZING
CORAL
REEFS



HOMESTAY DIVE ADVENTURES

Meridian Adventure is partnered with a number of local “homestays” in the Raja Ampat Regency. These are not homestays in the western sense, that is, you won’t be sharing a home but you will still be a guest of a Indonesian/ Papuan family. Accommodation is provided on the family’s land in the type of housing typical of the area, and 3 meals a day are provided, making it a true cultural experience.

Meridian Adventure facilitates the booking process and provides transport from our Waisai Resort to the various Homestays. Once settled in, Meridian Adventure Dive supports your daily 2 tank dive experience, providing high-tech dive equipment, on our state of the art dive boats.

CLICK ON OUR WEBSITE TO SEE



HOMESTAY DIVE
ADVENTURE MOVIE



WHAT TO EXPECT
AT YOUR HOMESTAY



CULTURAL
DIVERSITY





ENCOMPASSED
BY NATURE





SPECIAL
MOMENTS
WITH SPECIAL
PEOPLE





AN
EXPERIENCE
UNLIKE ANY
OTHER





ACCESS TO THE WORLD

Basing your yacht in Waisai makes perfect sense. Enjoy all the incredible activities that Raja Ampat has to offer before traveling to Singapore for shopping, Bali to party, Thailand to meditate, or Australia for an adventure.

To find out more visit
www.raja.meridianadventuredive.com

Follow us on



#meridianadventuresdive

ONE PLANET

ONE COMMUNITY

ONE OCEAN



PT Meridian Capital Marine Tourism Enterprises
Trading as Meridian Adventure Marina Club & Resort Waisai
Wisma GKB I, 39th Floor,
Jl. Jend. Sudirman No. 28, Jakarta,
10210, Indonesia